

POWER KEYED NOTES

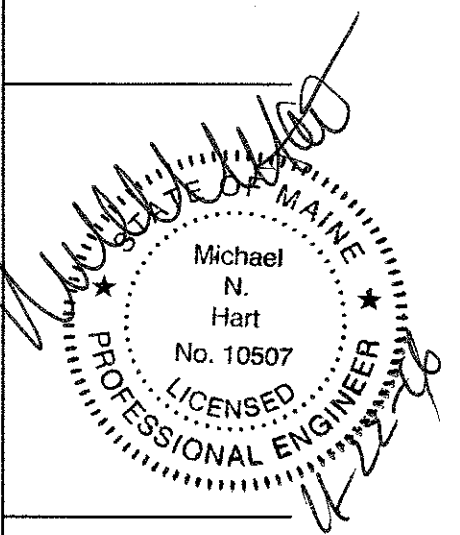
- ① NOT USED.
- ② JUNCTION BOX FOR TRAFFIC COUNTER SYSTEM. ROUTE CONDUIT TO TELEPHONE BACKBOARD.
- ③ - ⑥ NOT USED.
- ⑦ GENERAL PURPOSE DUPLEX RECEPTACLE MOUNTED AT 18" A.F.F..
- ⑧ NOT USED.
- ⑨ AIPHONE INTERCOM DOOR STATION. CONFIRM MOUNTING HEIGHT WITH ARCH.
- ⑩ NOT USED.
- ⑪ PROVIDE SURFACE-MOUNTED RECEPTACLE ABOVE TOP WINDOW MULLION, MAXIMUM 18" ABOVE TOP MULLION.
- ⑫ PROVIDE FLUSH FLOOR BOX, LEGRAND EVOLUTION PRODUCTS, #6ATCPNK (COORDINATE COVERPLATE COLOR WITH ARCHITECT), AND NEMA 5-20R RECEPTACLE. SEE ARCHITECTURAL PLANS FOR EXACT LOCATIONS. THE FLOOR BOX COVERS SHOULD ALL BE OPENING IN THE SAME DIRECTION.
- ⑬ FOR DEVICE SHOWN, RUN 1/2" CONDUIT IN FLOOR UNDER LAYMENT SPACE. DO NOT RUN CONDUIT PARALLEL WITH WOOD FLOORING, COORDINATE CONDUIT ROUTING WITH FLOORING CONTRACTOR AND ARCHITECT PRIOR TO LAYOUT TO ACCOMMODATE CONDUIT CUT-OUTS IN PLYWOOD. SEE SPECIFICATION SECTION 3.02.B.5.
- ⑭ - ⑯ NOT USED.
- ⑰ DOOR BUZZER PUSHBUTTON. CONFIRM MOUNTING HEIGHT WITH ARCH.
- ⑱ FIRE ALARM DEVICE.
- ⑲ - ⑳ NOT USED.
- ㉑ HVAC SENSOR LOCATIONS.
- ㉒ - ㉓ NOT USED.
- ㉔ JUNCTION BOX WITH 1/2" EMPTY CONDUIT FOR WIRELESS MOTION SENSOR COORDINATE MOUNTING HEIGHT WITH ARCHITECT.
- ㉕ EXISTING LANDLORD INSTALLED GFI WP RECEPTACLE AND DISCONNECT AT RTU UNIT.
- ㉖ - ㉗ NOT USED.
- ㉘ LANDLORD INSTALLED HEAT DETECTOR AT TOP OF ELEVATOR SHAFT AND IN ELEVATOR PIT.

POWER GENERAL NOTES

- A. ▽ ① PROVIDE AND INSTALL RACEWAY AND BOX FOR LV SYSTEMS.
- B. REFER TO MECHANICAL PLAN SET FOR MECHANICAL EQUIPMENT INFORMATION.
- C. REFER TO LIGHTING CONTROL PANEL SCHEDULE ON SHEET E-003 FOR CONTROLLED RECEPTACLE CIRCUITS.
- D. REMOVE ALL EXISTING ELECTRICAL EQUIPMENT NOT SHOWN ON ELECTRICAL PLANS REMOVE ALL CONDUIT AND CONDUCTOR PACK TO PANEL.

OWNER:
WILLIAMS-SONOMA, INC.
 3250 Van Ness Avenue
 San Francisco, CA 94109
 T 415 616 8602
 F 415 439 8164
 www.williams-sonoma.com

EEA
 EEA Consulting Engineers
 6615 Vaughn Ranch Road, Suite 200
 Austin, Texas 78726-2314 USA
 512.744.4400 main 512.744.4444 fax
 www.eeacorp.com
 State of Registration: MAINE
 Firm Registration No. N/A
 EEA Project No. 20160538

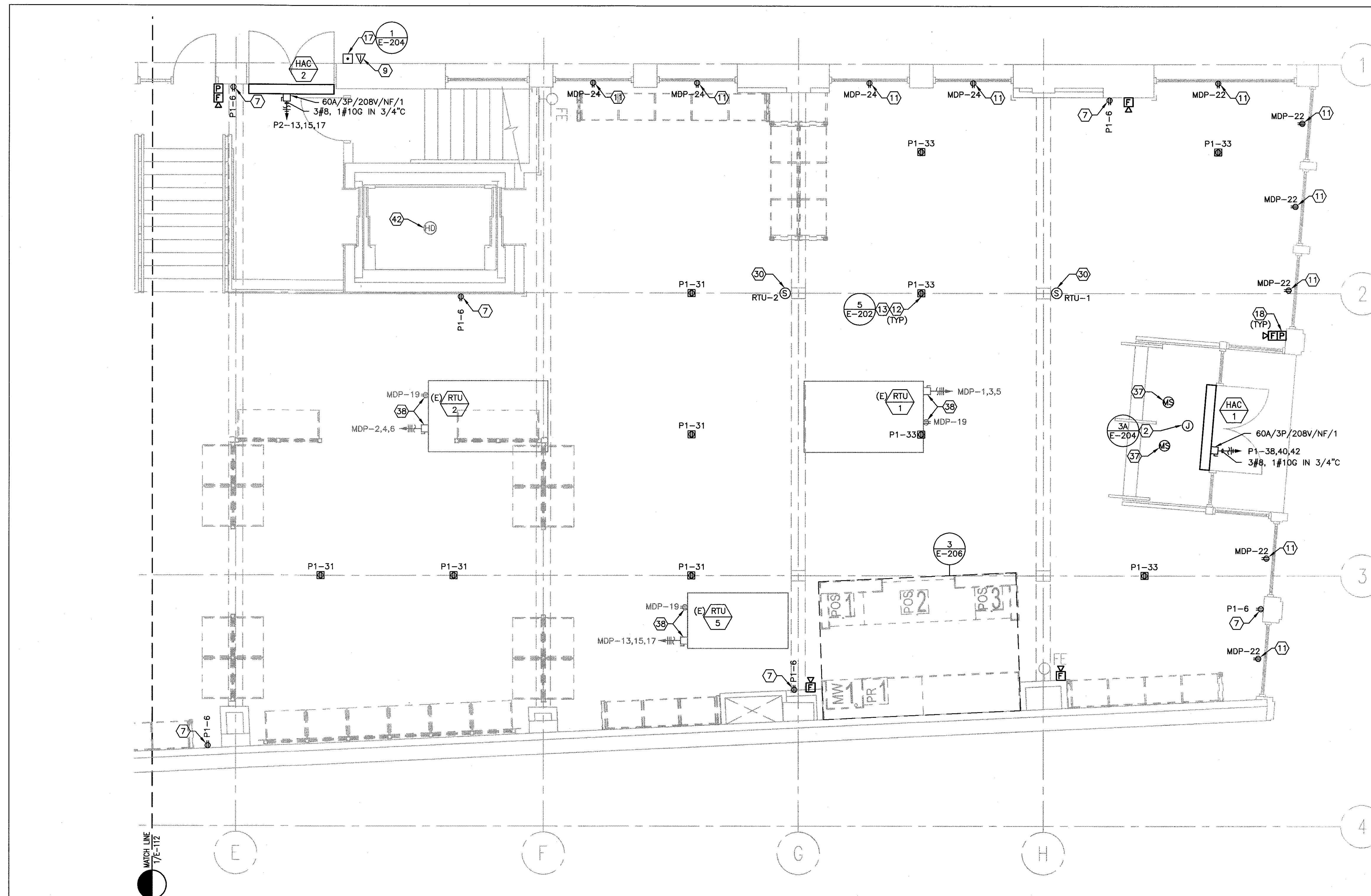


west elm
 Downtown Portland
 164 Middle Street
 Portland, ME 04101
 PROJECT #006-160335.00

ISSUED / REVISED	DATE
PRELIMINARY SET	09/08/16
LL COORDINATION SET	11/08/16
LL/PERMIT SET	11/21/16

PARTIAL FIRST FLOOR POWER PLAN

E-111

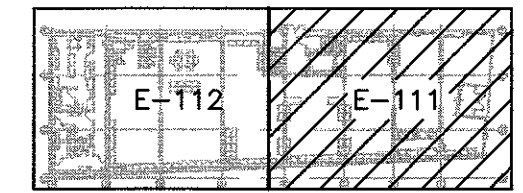


ALL ABANDONED AND/OR UNUSED COMPONENTS CREATED OR EXPOSED DURING CONSTRUCTION, INCLUDING BUT NOT LIMITED TO HVAC, CABLES, PIPING, WIRING, AND ASSOCIATED SUPPORTS AND/OR ATTACHMENTS SHALL BE REMOVED.

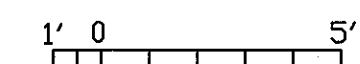
THE FIRE ALARM PLANS ARE A DEFERRED SUBMITTAL AND WILL BE SUBMITTED BY A LICENSED FIRE ALARM CONTRACTOR SUBMITTED BY THE GENERAL CONTRACTOR.

COORDINATE EXACT LOCATION OF FLOOR BOXES WITH ARCHITECTURAL DRAWINGS PRIOR TO ROUGH-IN.

FIRE ALARM SYSTEM SHOWN ON ELECTRICAL DRAWINGS ARE FOR SCHEMATIC AND BIDDING PURPOSES ONLY. FIRE ALARM SYSTEM CONTRACTOR SHALL SUBMIT FIRE DRAWINGS, EQUIPMENT CUT SHEETS, ETC., PER LOCAL CODE AND NFPA72 TO LOCAL AUTHORITIES HAVING JURISDICTION AND OWNER'S INSURANCE COMPANY FOR APPROVAL PRIOR TO ORDERING EQUIPMENT. ENGINEER WILL NOT APPROVE FIRE ALARM DRAWINGS, EQUIPMENT CUT SHEETS, ETC. INCLUDE IN BID ALL COSTS FOR PERMITS AND FEES. ALL PANELS AND PERIPHERAL DEVICES SHALL BE STANDARD PRODUCT OF SINGLE MANUFACTURER AND SHALL DISPLAY THE MANUFACTURER'S NAME ON EACH COMPONENT. ACCEPTABLE MODELS (UNLESS LANDLORD REQUIRES DIFFERENT): SILENT KNIGHT 5204 OR 5207, ADEMCO 100, FIRELITE 9200 SERIES.



KEYPLAN
N.T.S.



SCALE: 1/4" = 1'-0" @ FULL SIZE

PARTIAL FIRST FLOOR POWER PLAN